



# The SCFA Sentinel

published by the Sierra College Faculty Association

. . . by, for, and about the united faculty of Sierra College

February, 2007

Volume 14, Issue 1

## From the Editor's Desk...

*S*o...how cold was it? Well, on one morning during our January deep freeze, the thermometer on the outside my ill-named "sunroom" here above Nevada City measured a frosty TWELVE degrees. Yeah, that's cold.

Aside from the chilly temps, I do hope you had a restful semester break (albeit too short for most of us!). As I was working on this edition, I looked at the tag on the masthead that says Volume 14, and realized that means we're now in our seventh year with "The SCFA Sentinel"! Hard to believe it's been that long: in some ways, it feels like I've only been doing this for a few short semesters (and in some ways, it feels like decades!).

Once again, I want to thank all of you who've expressed your support and appreciation over the years...and to encourage everyone to let your own voices be heard in this publication. As I've said before, this is your newsletter, not mine—but it needs your thoughts, your opinions, and your ideas to make it all that it can be. Please feel free to contact me anytime (my phone and email address is on the back page) with anything you have to say.

I'd just like to remind my fellow part-timers that if you want to vote in future SCFA elections, you need to get yourself a Sierra College email account. (You really should have one anyway in order to stay "connected" to what's going on at Sierra.) See the article on Page 8 for details.

We also have some good news—albeit a bit preliminary—about the state budget for '07-08. While Sierra's fiscal situation may not be all that rosy, at least we should be able to count on getting a good share from the state again next year.

Have a great semester, and we'll see you next month!

Joan Merriam  
Editor



## President's Report

By SCFA President Dave Kenyon

I hope everyone has settled into the new year and semester.

Personally, I am very pleased with all the accomplishments that the negotiating team and the Executive Board achieved last semester.

A brief list includes:

- Faculty distributed revenue of \$3.6 million
  - \$2.86 million ongoing
  - \$763,000 one-time
- Across-the-board 7.4% raise for all faculty
- \$500,000 for faculty health care
  - \$300,000 GASB45 (with District match!)
  - \$100,000 Post-94 Trust (with District match!)
  - \$100,000 part-time health care proposal
- Established ONE salary matrix
  - Equalized full- and part-time salary progressions
  - Part-time/Overload rates increased
- Faculty interest-based rewrite of Contract
  - Articles 9,14,15,17,25
  - 11 of 25 articles modified in the last 18 months
  - 44% of the contract articles re-written

Also, in Fall '06 semester we instituted:

- Dept. Chair policy and compensation
- I.P. rights expansion
- Sabbatical leave process improvement
- FERC carry-over benefits
- Ph.D. salary column
- Improved formula adjustment
- On-line office hours
- Increased evaluation protections
- Improved Faculty Senate communication

This has truly been a banner year for the faculty, but there is more to come.

### THE FUTURE

The District is facing a number of serious issues which may affect our ability to provide the proper level of educational programs and support for our community. These is-

(Continued on page 2)

## 2 President's Report

(Continued from page 1)

sues include needed facility repairs, ongoing expenses for the various campuses, improving our 75/25 ratio, retirement medical costs, technology upgrades, and a host of other items.

This list is the top priority for the Board of Trustees and our President.

SCFA as well as the other units will be involved via the Strategic Council in helping to set priorities and in the development of solutions.

This is truly shared governance in action!

For more details on these issues, take a look at the presentations developed by Dr. Chavez and Doug Smith in Public Folders /Strategic Council /2006-07: "The Road Ahead" and "2006-07 Financial Overview2"

Also, please read the January 2007 President's letter which was sent to the faculty, staff and management of Sierra College.

Some of these issues may result in bargaining items and/or contract changes. Since ulti-

mately, the faculty will have to ratify these changes, it is in our best interest that we all become familiar with the problems at hand.

I encourage everyone to attend the Strategic Council meetings when you can, and of course the SCFA Executive Board meetings to share your concerns and provide input to the process.

I will continue to keep everyone updated as to our progress in the *Sentinel* as well.

## Notes from our Negotiator

### By SCFA Chief Negotiator Patt McDermid

The new semester has brought new and significant challenges, but our Formula and interdependent Omniparty and Strategic Council have likewise moved to meet them.

SCFA had already hurried to protect all members' interests by attacking the long-term obligations of GASB45, and is currently exploring ways to meet and retire that entire debt over the next few years. This will allow us to concentrate on making the Post-94 fund whole and healthy enough to meet future, growing needs just as we have attacked the GASB45 problem.

Also, SCFA has put in place the first Health Benefits Plan for our Part-time members who have no other health coverage, with implementation scheduled for Fall term. Part of the District's Request for Proposals (RFP) from healthcare administrators, in fact, mandates that the provider administer this benefits program for our members, funded initially by \$100,000 allotted by the SCFA Executive Board.

This Spring will see further advances, including the equalization and enrichment of faculty longevity increases, a contract extension with the Board of Trustees, exploration of solutions to our district's PT/FT ratio (the highest disproportion in the CCC system), and participation in shaping District responses to the crises so articulately defined recently by President Chavez. Much of this latter work is presently conceptual, but thoughtful consideration seems prudent given the gravity of these challenges.

Throughout all of these discussions and responses, however, the SCFA membership can rest assured that the redundant transparency of the Formula, as well as SCFA's proportional discretion and autonomy, will be unchanged and unchangeable. Only by representing our members' interests with single-minded conviction will we be strong enough to work in productive harmony with the other unions and the District.

It is useful to remember, however, that the burden of equality is not a light or exclusively abstract weight. The concerns of FUSE, for example, are no less important, necessary, and compelling than those of SCFA, SCMA, or indeed the District and the Board, in finding a common way through these challenges.

The old adversarial world of negotiations was, frankly, a simpler, though ultimately simplistic, environment: faction vs. faction and interest vs. interest, wherein one advances only at another's loss.

Now we are all committed, appropriately during this first springtime of an entire Formula Cycle, to a new way of solving problems and to a new way of viewing each other's concerns.

Recent results would suggest that if you seek this commitment's legacy, and the Formula's legacy so far, like seeking that of Christopher Wren when in London, just look about you.

# Faculty Projects & Pursuits

Showcasing the extracurricular achievements of our talented faculty colleagues.

Although this is somewhat “college-related” because the work will hang at NCC, we nevertheless felt it was deserving of special mention: the Friends of the Sierra College Library recently purchased a large oil painting done by our very own art instructor **PHIL BROWN**. Phil donated half of the purchase price to the college. The painting, titled “Below the 49 Bridge in the Fall,” is now part of the permanent art collection at NCC’s LRC.

Stop by and see this beautiful painting the next time you’re in the LRC...in fact, it’s worth a special visit!

We’ve also received word that New York University Press has just published a nonfiction book by our newest Sociology professor, **MEGAN SEELY**. The book, *Fight Like a Girl: How to Be a Fearless Feminist*, is designed for a new generation of young women who have benefited from the work of earlier feminists but put off by many of its old notions and images. The *Library Journal* says of the book, “Seely, the youngest elected president of California’s chapter of the National Organization for Women, combines her own story of third-wave feminism with an overview of the feminist movement and words to guide others.” It is available through NYU Press at [www.nyupress.org](http://www.nyupress.org), at Borders, and Barnes & Noble.

*If you’d like to let our college community know about something you’ve penned or produced, performed or pioneered—for profit or promise!—submit your news to Sentinel Editor Joan Merriam.*

## Proposed State Budget Bodes Well Again for CCs

Last month, Governor Schwarzenegger unveiled his \$143.4 billion budget proposal—and for the second year in a row, the state’s community colleges come out in fairly good shape.

Perhaps the best news is that the governor proposed an increase of about \$377 million in the community college Prop. 98 base, and a 6.4 percent increase from the current year funding.

If adopted unchanged, this portion of the budget will mark the first time that the CCC share of Proposition 98 funding exceeds the statutory requirement. Schwarzenegger is calling for an 11.06 percent share for community colleges.

Other highlights of the proposed budget include:

- 2 percent enrollment growth (\$109.1 million), which will enable CCs to enroll an additional 23,000 FTE students
- 4.04 percent COLA (\$224.9 million)
- \$19.6 million for select categorical programs, including EOPS, DSS, Matriculation, and Basic Skills
- \$33.1 million redirection of surplus funding for additional Matriculation and support services
- \$18 million in one-time and ongoing funding to support additional nursing programs, including startup monies for new nursing programs, new clinical simulation laboratories, expanding services to reduce attrition, and incentives to add additional prerequisite science courses
- An additional \$52 million for Career Technical Education. \$20 million of this will be devoted to improving coordination between high schools and CCs, broadening curricula to include technical programs in emerging and traditional career paths, and expanding courses to ensure more students gain the skills needed for employment.

The Governor also plans to place an educational facilities bond measure on the ballot in 2007-08 that would generate \$6 billion for community colleges.

While the current funding for part-time office hours, medical benefits, and equity is *not* threatened, for the second year in a row the governor has failed to fund the system’s request for additional funding in these areas.

The system’s request for new funding for full-time faculty positions was also ignored for a second year.

Finally, remember that this represents merely the governor’s *proposed* budget. Not only will he issue a May revise, but the entire budget will need to be approved by legislature before anything is a “done deal.”

# 2007 Student Success Workshops Announced

Want your students to be successful in your courses? Who doesn't?! Then clip out this handy guide to the various Student Success Workshops that will be going on this semester on the Rocklin Campus, and encourage your students to attend. They—and you!—will be glad they did!

| WORKSHOP  | INSTRUCTOR                           | DATE/TIME  | ROOM                     |
|---|--------------------------------------|--|--------------------------|
| <b>Effective Strategies for Textbook Reading</b>                                | Alan Shuttleworth                    | Thurs., Jan. 25: 2-3:30PM<br>Fri., Jan. 26: 10-11:30AM     | L-193<br>LRC-212 (53)    |
| <b>Time Management</b>  | Mark Kwoka                           | Thurs., Feb. 1: 3-4:30PM<br>Fri., Feb. 2: 10-11:30AM       | L-107<br>LRC-212 (53)    |
| <b>Effective Note Taking</b>  | Lisa Rochford                        | Tues., Feb. 6: 1-2:30PM<br>Fri., Feb. 9: 12:30-2PM         | Fireside<br>LRC-212 (53) |
| <b>Overcoming Test Anxiety</b>  | Chris West                           | Tues., Feb. 20: 9:30AM-1PM                                 | Fireside                 |
| <b>What Type of Learner Are You?</b>  | Martine Shelley                      | Thurs., March 1: 2-3:30PM<br>Fri., March 2: 10-11:30AM     | L-107<br>LRC-212 (53)    |
| <b>Success in the Sciences</b>  | Alex Amigo                           | Fri., March 9: 10:30AM-12 noon                             | LRC-212 (53)             |
| <b>Memorization Strategies</b>  | Heather Roberts                      | Wed., March 14: 12:30-2PM<br>Fri., March 16: 10-11:30AM    | W-213A<br>LRC-212 (53)   |
| <b>Are You on Course to Success?</b>  | Melissa Prinzing &<br>Andrea Neptune | Thurs., March 22: 9-10:30AM<br>Fri., March 23: 12 -1:30PM  | LRC-107<br>LRC-212 (53)  |
| <b>Ready, Set, Research</b>   | Michelle Johnson                     | Thurs., March 29: 5-6:30PM<br>Fri., March 30: 11AM-12:30PM | Fireside<br>LRC-212 (53) |
| <b>Handling Life's Bumps without Crashing</b>                                   | Mary Moon                            | Tues., April 30: 9-10:30AM<br>Fri., April 13: 10-11:30AM   | Fireside<br>LRC-212 (53) |
| <b>Painting with Words:<br/>Harnessing the Power of<br/>Descriptive Writing</b> | Bright Rope                          | Tues., April 17: 9-10:30AM<br>Fri., April 20: 1-2:30PM     | Fireside<br>LRC-212 (53) |
| <b>Managing Your Money</b>  | Sonja Lolland &<br>Elaine Bienvenue  | Wed., April 25: 11AM-12:30PM<br>Fri., April 27: 10-11:30AM | Fireside<br>LRC-212 (53) |

## and for Faculty...

| WORKSHOP   | HOST                             | DATE/TIME                          | ROOM    |
|--|----------------------------------|------------------------------------|---------|
| <b>Effective Strategies for Textbook Reading</b>             | Alan Shuttleworth                | Friday, Feb. 9<br>10AM - 12 noon   | LRC-212 |
| <b>Teaching to All the Learning Styles in Your Classroom</b> | Martine Shelley &<br>Sue Johnson | Friday, April 20<br>10AM - 12 noon | LRC-212 |

## ❧ Transitions ❧

### CONDOLENCES...

This has been a winter of losses for many in our Sierra College family.

In late January, former Human Environmental Services instructor **Shalita Blackburn** passed away. Shalita worked at Sierra from 1990-2001.

Part-time ESL instructor **Margo Marvin** lost her mother, Frances Marvin, on December 13 after a long illness.

On December 16, the stepson of part-time instructor and SCFA Vice-President **Jim Weir** died very unexpectedly.

Three days later on December 19, former Sierra football coach **Ken Moore** passed away. Ken was Sierra's Running Back Coach from 2003-06.

Retired Business instructor **Bart Newlin** lost his wife Madalene on December 4.

And in late November, Energy Maintenance Technician **Rick McMurtry's** father-in-law Joseph Taylor passed away.

We extend our deepest sympathies to these individuals, their families, and loved ones.

### CONGRATULATIONS...

To **Rebecca Bocchicchio**, who was named as the permanent Associate Dean of Liberal Arts.

### AND WELCOME BACK...

To "Limpin' Lin" **Lin Fraser**, who is back in the proverbial saddle after being sidelined all of last semester with a broken hip. Though she needs to use a walker or crutches most of the time, she says it's *great* to be back teaching again after her lengthy and enforced hiatus!

*If you have news of celebrations, sorrows, or other important life transitions within our Sierra College family of faculty and staff, please send a note or e-mail with the details to Sentinel Editor Joan Merriam.*



## Dinosaurs Are on the March for March!

Dinosaur Day 2007 is just around the corner!

Scheduled for Sunday, March 11, this year's theme is Preparing the Past for the Future. The event will focus on the discovery, collection, preparation, research, and exhibition of fossils from around the world and throughout history.

Dinosaur Day organizer Kim Stevens want to include poster displays of well-known fossil hunters and researchers, museums that house dinosaur fossils, famous fossil quarries and specimens,

rock formations that contain dinosaur and other types of fossils, and anything else having to do with paleontology.

She's asking for your help on this project...not just in creating the posters and displays, but also by incorporating dinosaur doings into your curricula.

Dinosaur Day is also a great opportunity to get your departments involved. For instance, Early Childhood Education

could have volunteers working with kids in some of the activity booths...the Art department could

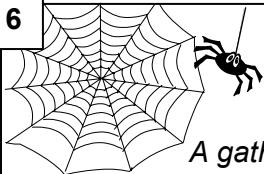
create paleontology-related art pieces...the Photography department could have student photographers on site at the event...Videographic students could make short documentaries or advertisements for future Dinosaur Days.

Just let your imagination be your guide!

Kim is also looking for volunteers to staff booths, and provide general help and information (no dinosaur knowledge is required!).

For more information or to volunteer, contact Kim Stevens at Ext. 7009.





# Web Sites

*A gathering of helpful resources on, about, and for those of us in the world of Higher Education*

- **WORLD LECTURE HALL**  
<http://web.austin.utexas.edu/wlh/>  
 This free online database of course materials, including syllabi, from around the world publishes links to pages created by faculty worldwide who are using the Web to deliver course materials in any language.
- **CAMPUS TECHNOLOGY**  
<http://campustechnology.com/>  
 This online magazine may be geared for campus IT professionals, but it also contains excellent articles are resources for faculty, including e-learning and course management systems, digital media, presentation technology, and strategies for managing students in our increasingly “smart” classrooms.
- **AMERICAN ASSOCIATION OF UNIVERSITY PROFESSORS**  
[www.aaup.org](http://www.aaup.org)  
 This valuable site includes information about academic freedom, governance, legal, research, organizing, and lobbying, as well as reports and publications about issues in higher education such as affirmative action, ethics, and tenure.
- **UC TEACHING, LEARNING, AND TECHNOLOGY CENTER**  
<http://www.uctltc.org/>  
 A virtual center established that provides information on the development and use of teaching and learning technologies, including resources to aid instructors in making decisions about appropriate uses of technology in instruction, and links to resources for implementing technology in instruction.

## Why Roseville Gateway?

**By Michelle Johnson, English Instructor**

To those of you wondering, “*Why would I want to teach at Roseville Gateway?*” I have an answer for you.

I started teaching at Roseville Gateway right after Diane McKnight took over as Dean in the fall of 2005, and I haven’t regretted my travels at all.

First of all, the teaching accommodations far surpass the portables I usually teach in on Rocklin main campus. The rooms are clean and bright and the walls are thick, so that I don’t have to compete with the instructor on the other side; more importantly, s/he doesn’t have to compete with me—I tend to be a bit dramatic and loud.

The support staff at Roseville Gateway makes me feel as though I am on the main campus:

Norm and Pam are always available to provide any help that I need, whether it be copy issues or a last minute help with technology.

The faculty room is always well equipped, and the break room is a nice addition to the new spruce-ups taking place on site. Dean McKnight is often seen peeping in through the door windows letting me know that she’s around if I need her. These little things in a more intimate learning setting make me feel as though I am never too far from “home.”

Most importantly, why I’m teaching fully half of my full-time load at Roseville Gateway in the spring is...*the students.*

My experience with my Roseville Gateway students has been

excellent. The retention rates are good, the students seem to be dedicated and focused not so much on “campus-life” (which is important, to be sure) but on getting their education completed.

They are there regularly, prepared and ready to learn. The success rates with these students was at an all-time high last semester: originally, I had 30 students enrolled in my English 1A class, and even after the withdraw date, I still had 27 students. The majority of them are “B” students or better.

So, if you’re on the fence about coming to Roseville Gateway, hopefully my little testimony will encourage you to at least come over and check out what RG has to offer.

I know I am glad I did!



## NEVADA COUNTY CAMPUS

More NCC classrooms have received technological upgrades. Our “Smart Classrooms” now include B205, L204, L205, L206, M100, M106, S100, S105, S112 and S116. Our Audio/Visual Dept. also has two LCD Projectors and two laptop computers that instructors can check out for use at both on- and off-campus locations.

Contact Ern Chiappari at 274-5343 or [echiappari@sierracollege.edu](mailto:echiappari@sierracollege.edu).

Thanks to the efforts of Psychology instructor Stephanie Coday, NCC now has a special place for nursing mothers, similar to the one available on the Rocklin campus. Private lactation stations, which are available to both students and employees, are set up in M103 and M104. Visit or call Administration at 274-5301 for a key or more information.

The recent cold snap created quite a scene in our two ponds, both of them covered with a silvery sheet of ice that refused to melt for days. If you were concerned about our resident fish, don't worry: the ice wasn't thick enough to rob them of oxygen...but it's a sure bet they were awfully cold around the gills!



## ROSEVILLE GATEWAY

The results of the Roseville Gateway facility assessment are complete, resulting in a recommendation to *not* purchase the building.

The study concluded that cost to merely acquire the facility would be approximately \$50 million. That price tag would include Division of State Architects requirements, HVAC upgrades, phone and data upgrades, and other repairs and maintenance. It does not, however, include the cost of a parking structure or other amenities that would be necessary to provide a full-service campus center. The bottom line is that purchasing the facility at this time is neither economically feasible nor prudent.

Programs housed here at Gateway still have a home, however, since the current lease on the facility runs through 2015. In the meantime, the District continues to search for a suitable facility for a permanent Sierra College campus in Roseville.

The proposal not to purchase the building will be brought before the Board of Trustees at their February 13th meeting.

## TRUCKEE CENTER

For those of you who missed the announcement, we had some excitement here at Truckee early last month: during the late morning of January 11, there was a sudden malfunction in the fire sprinkler system, which resulted in minor water damage in the large computer lab, the conference room, and adjacent hallways. It took the Truckee Fire Department to come out and shut down the sprinkler system, but when all was said and done, there was less than a half an inch of water on the floor, and very little damage to anything.



# Save the Date!

## March 5 is FACCC Lobby Day!

With all the new legislators taking office this term, it's crucial that CCC faculty let our representatives hear our voices on the issues that affect us and our students.

Lobby Day is FREE to attend...and if you want to visit with your legislators, FACCC will make the arrangements for you. Call 916-447-8555 or email Janet Oropeza at [ohmitey1@aol.com](mailto:ohmitey1@aol.com).

For more details on Lobby Day, visit [www.faccc.org](http://www.faccc.org).



# ***PART-TIME FACULTY ALERT:*** **Why YOU Need a College Email Account**

**AFTER APRIL OF THIS YEAR, THE ONLY WAY THAT MEMBERS OF SCFA CAN VOTE WILL BE ELECTRONICALLY...AND THE ONLY WAY THEY CAN VOTE ELECTRONICALLY IS IF THEY HAVE A COLLEGE EMAIL ACCOUNT.**

Let's repeat that: if you're a member of SCFA (and if you're not, **WHY NOT??**), you'll need a Sierra College email address in order to vote. That means if you want to vote on new Board members...on Constitutional and Bylaw changes...on Side Letters...and on anything else that needs to be ratified by faculty...you'll need to have a college email account.

All full-time faculty are required to have college email addresses, but that's not so for part-timers.

However, if you're a part-timer and you want to truly be a member of the college community...if you want to stay informed and aware...and if you want to participate in your union (to which you already pay dues!), you need to sign up for a college email account. TODAY.

It's easy: sign-up forms are available in your campus mailrooms. Or, you can just call Extension 1234 and ask to set up an account.

Remember that you **MUST** have a [sierracollege.edu](mailto:sierracollege.edu) email address by April if you want to vote in the Spring SCFA election!

## **McDaniel Honored by Nevada County Schools**

Part-time Sierra College Physics instructor John McDaniel was recently named Teacher of the Year by the Nevada County Superintendent of Schools.

John teaches physics full-time at Nevada Union High School, and was selected for this honor because of his excellent teaching strategies, student success, and rapport with students, families and the community.

A student team from John's high school class recently won first place at a local science fair, which gained them entrance and recognition at the State Science Fair at USC.

John has taught physics in the evenings at NCC since the spring of 2005.

Congratulations, John!

The **SCFA Sentinel** is published by the **SIERRA COLLEGE FACULTY ASSOCIATION** in Rocklin, California. We welcome your comments, suggestions, and letters; please contact SCFA Editor Joan Merriam, c/o Sierra College Nevada County Campus, 250 Sierra College Drive, Grass Valley 95945

### ◆ SIERRA COLLEGE FACULTY ASSOCIATION ◆

|                       |               |              |  |
|-----------------------|---------------|--------------|--|
| <b>PRESIDENT</b>      | David Kenyon  | Ext. 2459    | <a href="mailto:dkenyon@sierracollege.edu">dkenyon@sierracollege.edu</a> |
| <b>VICE-PRESIDENT</b> | Jim Weir      | 530-272-2203 | <a href="mailto:jim@rst-engr.com">jim@rst-engr.com</a>                   |
| <b>TREASURER</b>      | Shaunda Crane | Ext. 3722    | <a href="mailto:scrane@sierracollege.edu">scrane@sierracollege.edu</a>   |
| <b>SECRETARY</b>      | Matt Archer   | Ext. 2628    | <a href="mailto:marcher@sierracollege.edu">marcher@sierracollege.edu</a> |

#### BOARD MEMBERS: Full-time REPRESENTATIVES

|               |           |  |
|---------------|-----------|--|
| Richard Alman | Ext. 2782 | <a href="mailto:ralman@sierracollege.edu">ralman@sierracollege.edu</a>     |
| Jim Forkum    | Ext. 2579 | <a href="mailto:jforkum@sierracollege.edu">jforkum@sierracollege.edu</a>   |
| Jane Haproff  | Ext. 7159 | <a href="mailto:jhaproff@sierracollege.edu">jhaproff@sierracollege.edu</a> |

#### BOARD MEMBERS: PART-TIME REPRESENTATIVES

|                  |              |  |
|------------------|--------------|--|
| Wayne Barbee     | Ext. 3513    | <a href="mailto:dwbarbee@sbcglobal.net">dwbarbee@sbcglobal.net</a>         |
| Joan Merriam     | 530-478-9883 | <a href="mailto:jmerriam@sierracollege.edu">jmerriam@sierracollege.edu</a> |
| Mary Ann Cassell | Ext. 3550    | <a href="mailto:Rogers-C@pacbell.net">Rogers-C@pacbell.net</a>             |

#### DISPUTE RESOLUTION OFFICERS

Richard Alman - Jim Forkum - Wayne Barbee

#### NEGOTIATING TEAM

Patt McDermid, Chief Negotiator Ext. 2722 [pmcdermid@sierracollege.edu](mailto:pmcdermid@sierracollege.edu)  
 Richard Alman - Wayne Barbee - Jim Weir - Dave Kenyon - Winsome Jackson

#### PUBLIC RELATIONS AND COMMUNICATIONS OFFICER

(including SCFA SENTINEL Editor & SCFA WEBSITE ADMINISTRATOR)  
 Joan Merriam

~ SCFA IS A PROUD MEMBER OF THE CALIFORNIA TEACHER'S ASSOCIATION ~